

Remotely execute any application without agents

RemoteExec

Getting Started Guide

For additional information about RemoteExec, please contact IS Decisions at one of the following:

Phone: +335.59.41.42.20 (French time, i.e GMT +1)

Fax: +335.59.41.42.21

Web: <http://www.isdecisions.com>

Email: info@isdecisions.com

For technical assistance, please use our Technical Support Request Form at:

<http://www.isdecisions.com/index.cfm?p=support>

Or send an Email to support@remoteexec.com

Table of contents

<u>WELCOME TO REMOTEEXEC</u>	<u>3</u>
OVERVIEW	3
SYSTEM REQUIREMENTS	3
<u>GETTING STARTED.....</u>	<u>3</u>
REMOTEEXEC SETUP	3
YOUR FIRST REMOTE EXECUTION.....	3
FIRST STEP: CHOOSE YOUR EXECUTABLE	3
SECOND STEP: CHOOSE YOUR TARGET COMPUTERS	4
THIRD STEP: THE EXECUTION	5
YOUR FIRST GENERAL SHUTDOWN.....	5
FIRST STEP: DEFINE YOUR SYSTEM ACTION.....	5
SECOND STEP: CHOOSE YOUR TARGET COMPUTERS	6
THIRD STEP: THE EXECUTION	6

Welcome to RemoteExec

Overview

RemoteExec allows administrators to run tasks remotely. This is useful to update all the Windows NT/2000 computers on your network, inform the users of an imminent event with a richer presentation than network messages (*net send* command), shutdown all your computers, logoff all logged users and so on.

System Requirements

Target computers: Windows NT 4 (no service pack requirement), Windows 2000, Windows XP
Administration Console: Windows NT 4 Service Pack 5, Windows 2000, Windows XP
Internet Explorer 4.0 (needed to read the help file) or above

Getting started

RemoteExec setup

Unzip the package named *RExecNT_eval.zip* The following files will be extracted:

<i>RemoteExec.exe</i>	The executable
<i>RemoteExec.chm</i>	The help file
<i>License.rtf</i>	The license agreement

No installation is required. Just execute *RemoteExec.exe*. The program will ask you for the license agreement. If you agree, click *Yes* and you will be ready to use RemoteExec.

Your first remote execution

First step: choose your executable

Enter the path to your executable in the *File* field. Keep the *Auto* check box checked (to automatically choose best options). If the *Interactive* option is available (depends on the file type), choose it if the logged user on the remote computer must interact with the program.

You can execute a classical executable (*.exe*, *.bat*, *.cmd*) or a script (*.vbs* and *.js*), or all file type associated with an executable (*.txt*, *.wav*, *.reg*, *.inf* ...).

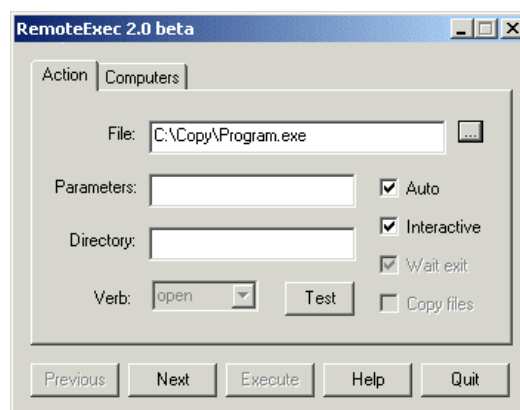


Figure 1 – Choose the executable

When done, click *Next*.

Second step: choose your target computers

Choose here the target computers on which you want to execute your program:

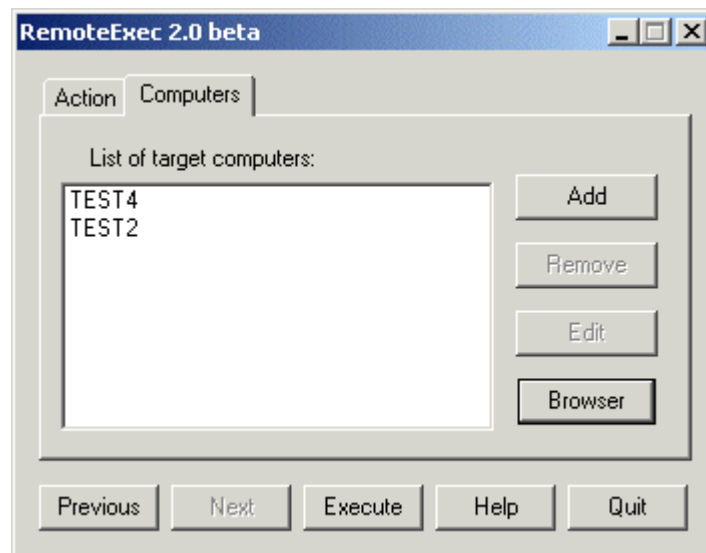


Figure 2 – Choose the target computers

You can enter a computer name manually with the *Add* button or from the browser with the *Browser* button (useful to select all computers from a domain in one click).

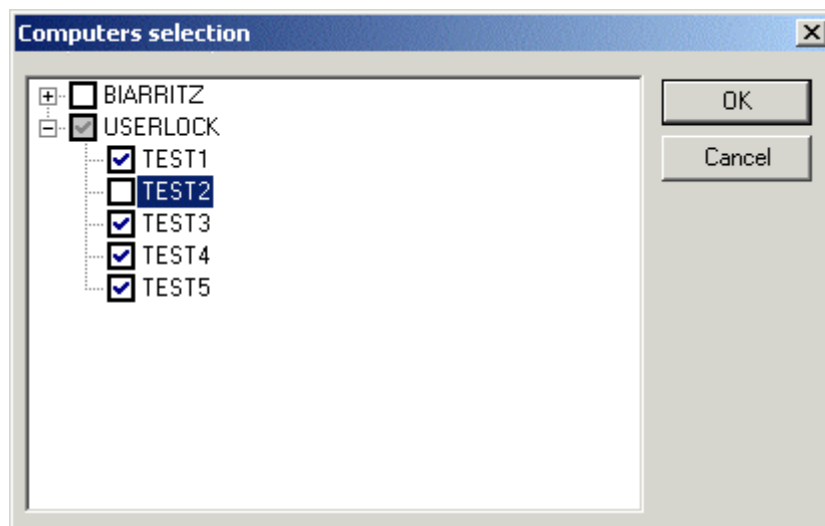


Figure 3 – Choose the target computers from the browser

Third step: the execution

During the execution you can follow the current status for all computers with the progress window. If an error occurs, the error code and a message will be displayed in the *message* column.

While all tasks aren't launched, you can click *Abort* to avoid the execution on the remaining computers.

When all tasks are launched but not finished, you can click *Cancel* for not waiting the end of the execution.

During the execution you can kill all selected processes (*Status = Running*). It might be useful if the remote execution sticks.

When all tasks are done, you can save the computers on which the execution has failed. Useful to later retry the same operation on currently offline computers.

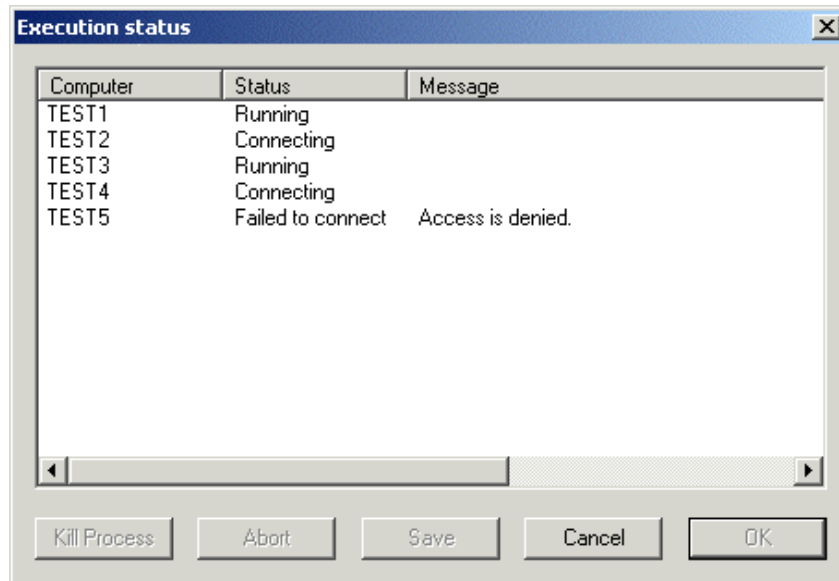


Figure 4 – See the execution in the progress window

Your first general shutdown

First step: define your system action

In the *Action* tab choose *System Action* with the contextual menu.

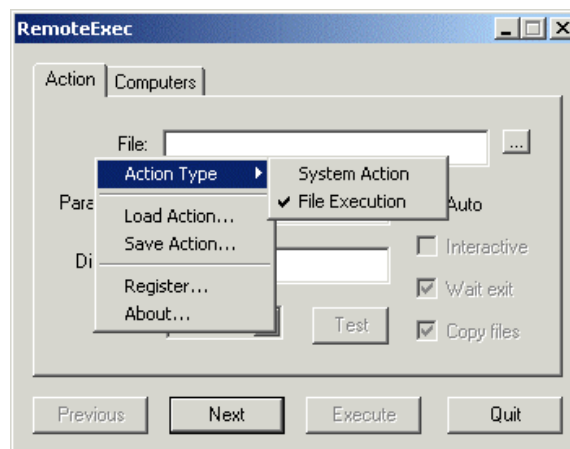


Figure 5 – Choose the System Action in the contextual menu

Choose *shutdown* for *system action*, choose the *timeout* in seconds and the message displayed to the user during the timeout.

You can check the option *Force application to close* if you want to avoid that the shutdown sticks if the current user has open documents.

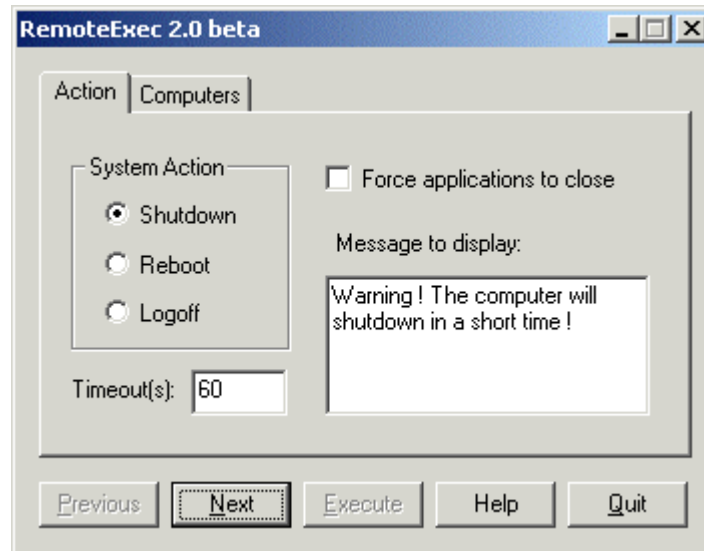


Figure 6 – Set the shutdown up

When done you can click *Next*.

Second step: choose your target computers

See Your first Remote Execution

Third step: the execution

See Your first Remote Execution