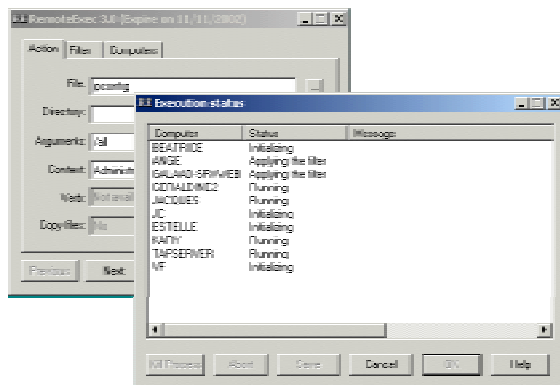


RemoteExec® is a very powerful tool for remotely updating your Windows NT/2000/XP networks.

It allows you to remotely execute the same program on multiple computers at once, without any agent installed on target machines.

This will greatly help you update and configure all of your Windows NT/2000/XP servers and workstations.



## Features

- Remote execution of program files (.exe, .bat, .cmd), scripts (.vbs, .js) and all associated file types (.doc, .wav, .reg, .msi...)
- Predefined actions to easily deploy Service Packs, patches, hotfixes, Internet Explorer updates, and most Microsoft updates.
- Predefined action to easily deploy Windows Installer packages (.msi). Installation is customisable using transform files.
- Remote shutdown, reboot and logoff
- Ability to locally follow through a text console remote execution of scripts and batch files
- Ability to launch a "telnet like" session on a remote computer.
- Several execution contexts:
  - Interactive:** to display a window for the currently logged on user.
  - Administrative:** to launch administrative tasks.

- An integrated mini scanner to perform conditional executions according to: OS version, OS level (Workstation/server), Internet Explorer version, Service Packs level, and a customisable value/key of the registry
- Ability to save/load configured actions and computer lists into files
- Command line mode to remotely execute actions from a script or with the task scheduler.
- An integrated scheduler to easily schedule RemoteExec tasks.
- After each execution the list of computers on which the execution failed/succeeded is saved in a log folder.

## Samples of use

- Remotely install Service Packs, security patches, hotfixes, and Windows Installer Packages (.msi file) like MS Office 2000/XP.
- Modify remote registries with .reg file.
- Inform users of imminent events (server shutdowns, power cuts...) with a better presentation than popup messages. (e.g.: you can display the message as an html page or a Word document).
- Shutdown your entire network before a power cut
- Close all user sessions on your network after working hours to improve security
- ...

## Supported platforms

- Target computers  
Windows NT /2000/XP (no Service Pack requirement).
- Administration console  
Windows NT 4 Service Pack 4 with Internet Explorer 5 or more, Windows 2000, Windows XP

## Contact information

For additional information, please contact IS Decisions at one of the following

Phone: +335.59.41.42.20  
 Fax: +335.59.41.42.21  
 Web: <http://www.isdecisions.com>  
 Email: [info@isdecisions.com](mailto:info@isdecisions.com)



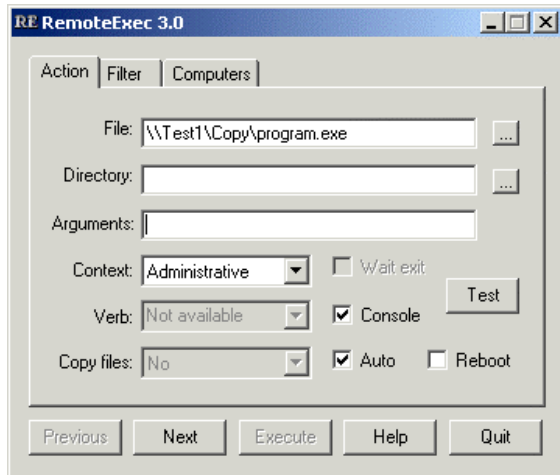


Figure 1 Remote execution of a program file

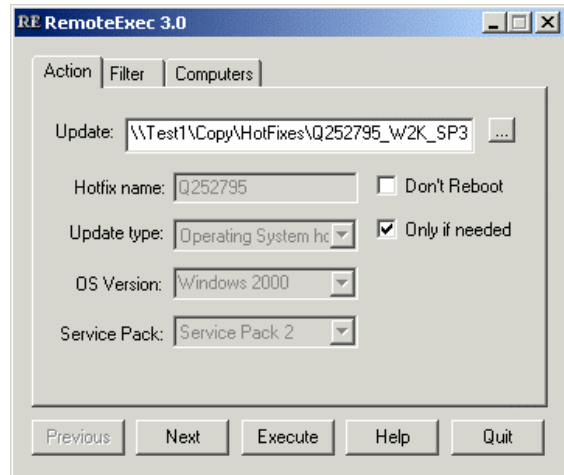


Figure 4 Hotfixes and Service Packs deployment

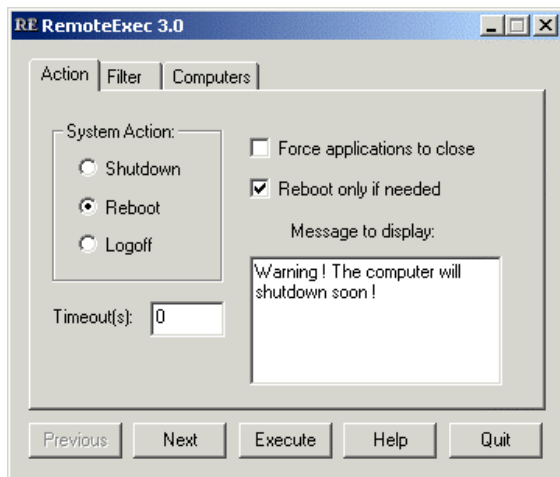


Figure 2 Shutdown/Reboot remote computers

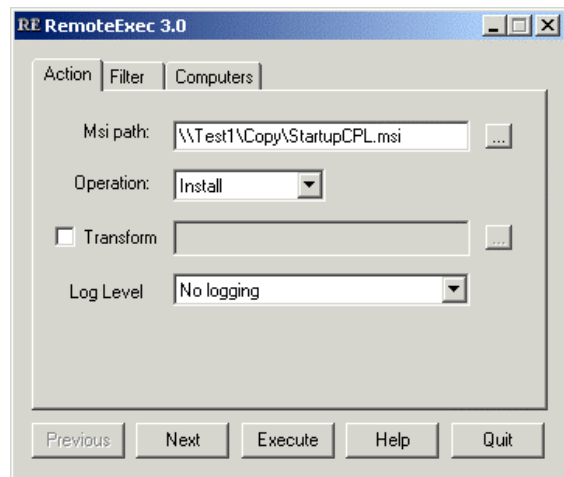


Figure 5 Windows Installer package deployment

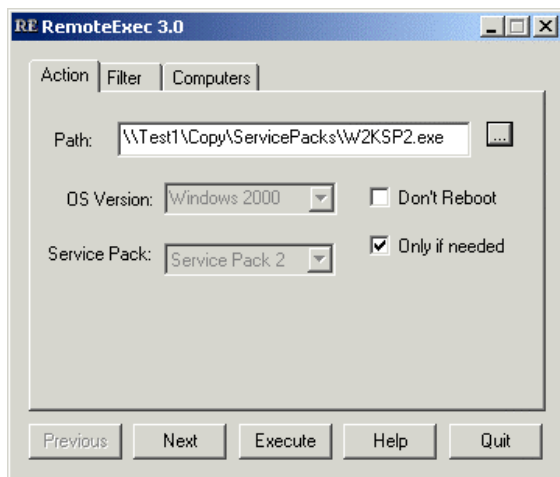


Figure 3 Services Packs deployment

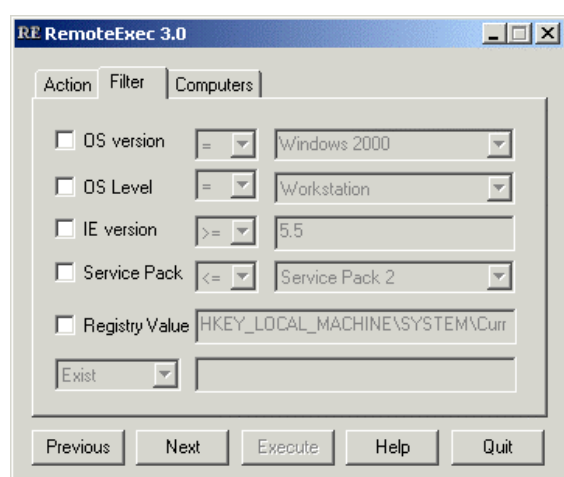


Figure 6 Conditional execution using a filter